



2019

# Piloting Cruise ships in Shanghai

 Shanghai Maritime Pilots' Association



皇家北動比郵輪  
旗下的海洋神訪  
號總長2840米寬320米  
客2076人航速24節丙申冬  
河根源於瀛泰軒

# CONTENT

1

Overview of piloting  
cruise ships in  
Shanghai

2

Issues of piloting  
cruise ships in  
Shanghai



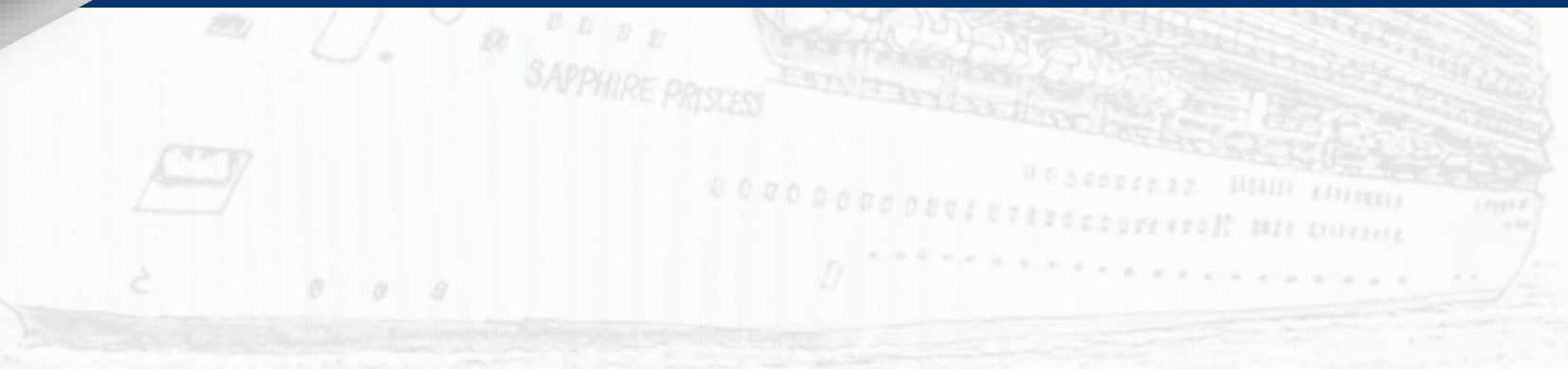


紅寶石公主號  
於2014年6月日  
速空節排水量115875噸  
姐妹船「紅寶石公主  
仲夏所根寫於滬上

01

Part one

# Overview of piloting cruise ships in Shanghai



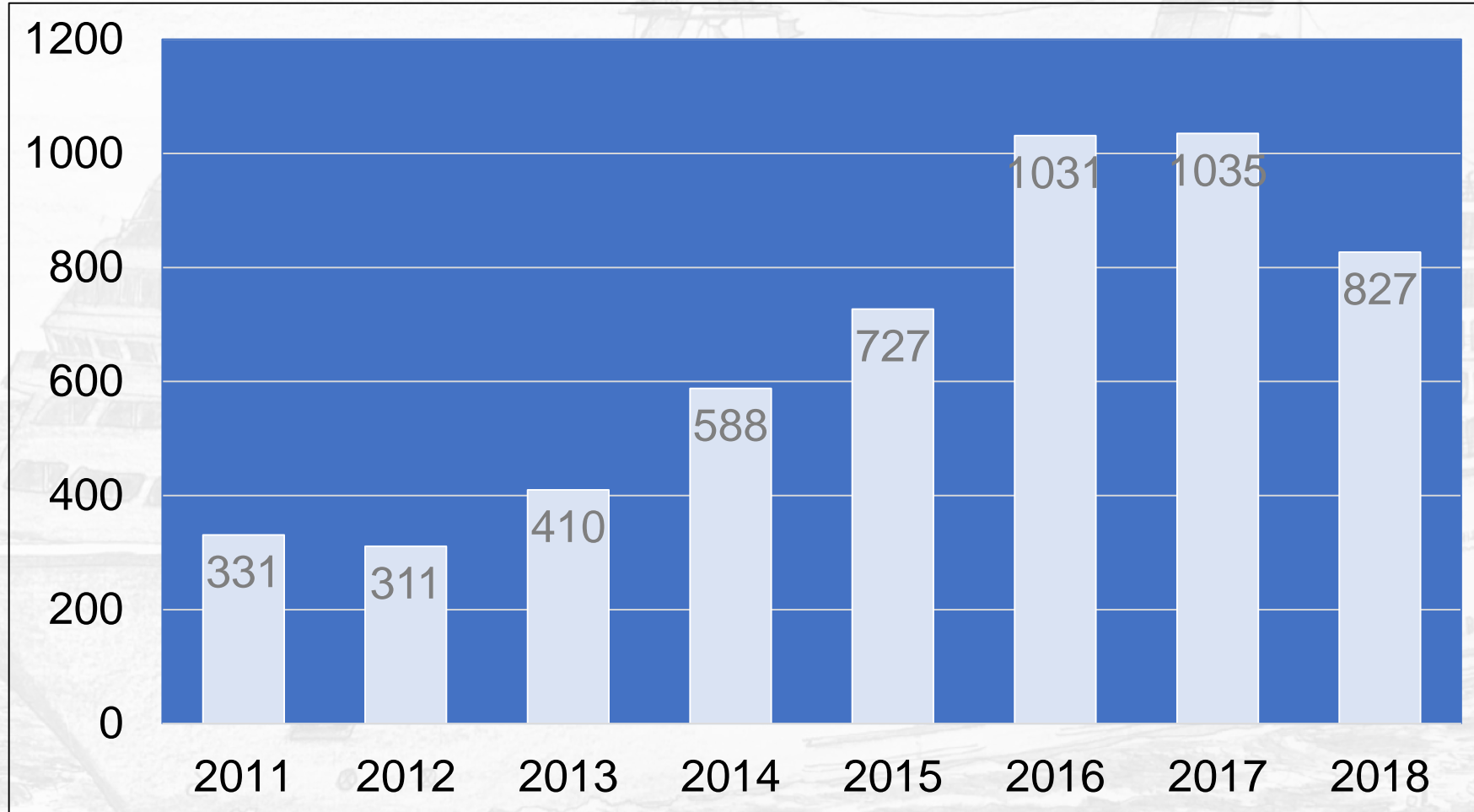
01

# Overview of piloting cruise ships in Shanghai

2700噸  
造於2000年德國的「德爾菲因」  
長181米寬25米吃水  
30277噸  
載  
歲末行報寫



## Pilotage Volume





01

# Overview of piloting cruise ships in Shanghai

## Main Fairways:

Deep Water Fairway of Changjinagkou

Waigaoqiao Fairway

Baoshang Fairway

Baoshan North Fairway

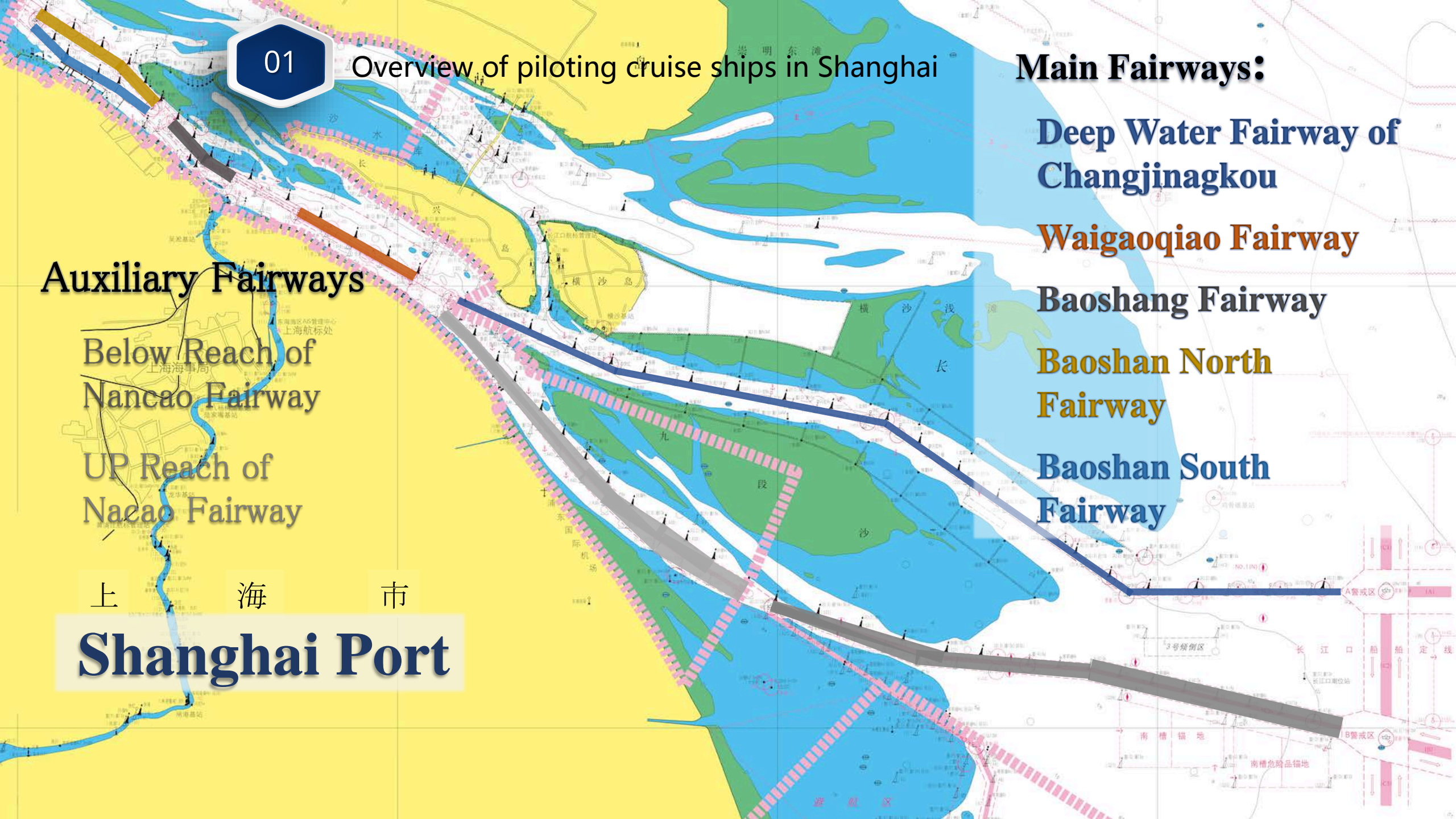
Baoshan South Fairway

## Auxiliary Fairways

Below Reach of Nancoo Fairway

UP Reach of Naeao Fairway

上海市  
**Shanghai Port**





01

# Overview of piloting cruise ships in Shanghai

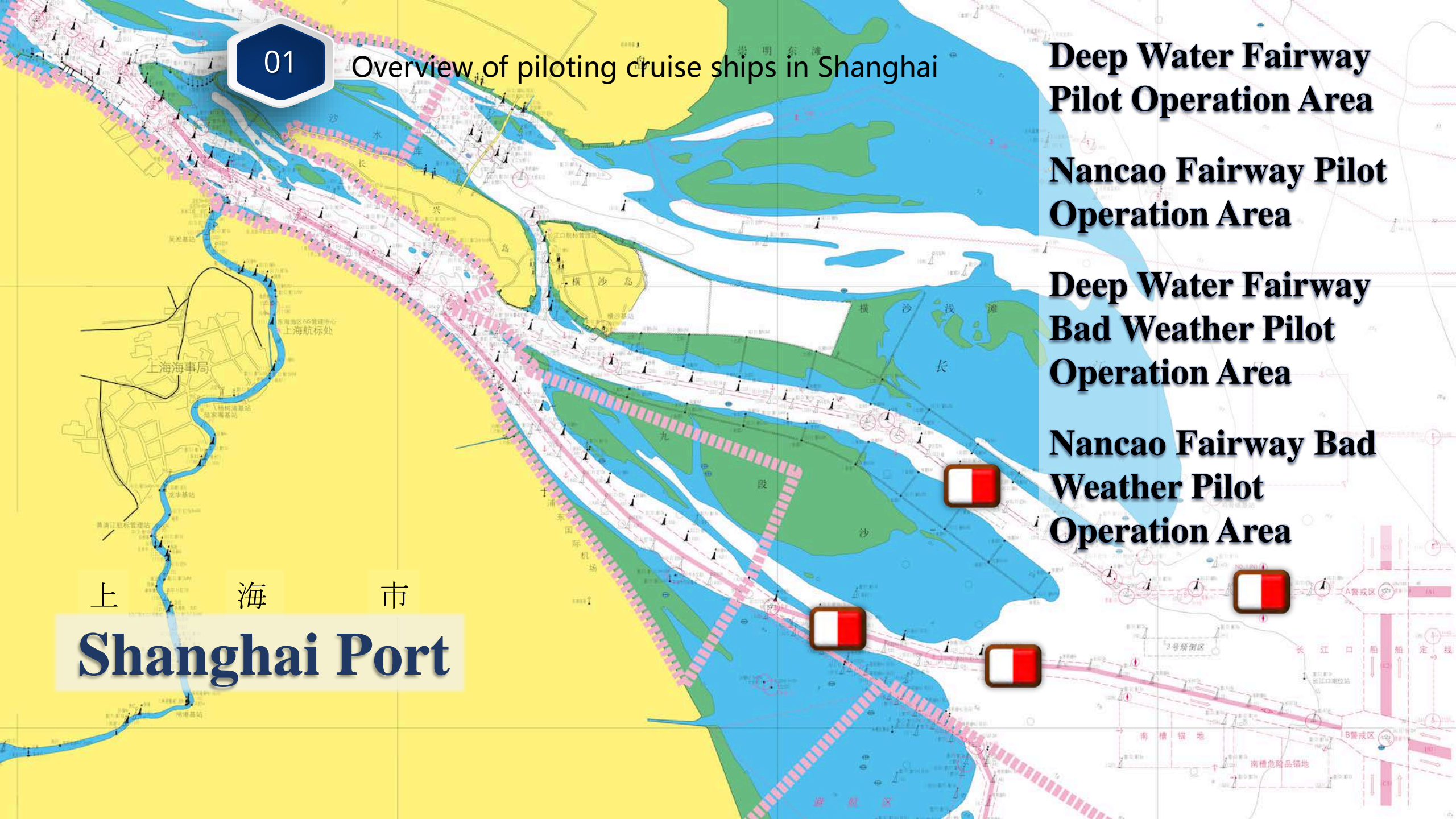
**Deep Water Fairway Pilot Operation Area**

**Nancao Fairway Pilot Operation Area**

**Deep Water Fairway Bad Weather Pilot Operation Area**

**Nancao Fairway Bad Weather Pilot Operation Area**

上海市  
**Shanghai Port**





01

Overview of piloting cruise ships in Shanghai

# Wusongkou International Cruise Terminal



# Shanghai Port International Cruise Terminal



上海  
Shanghai

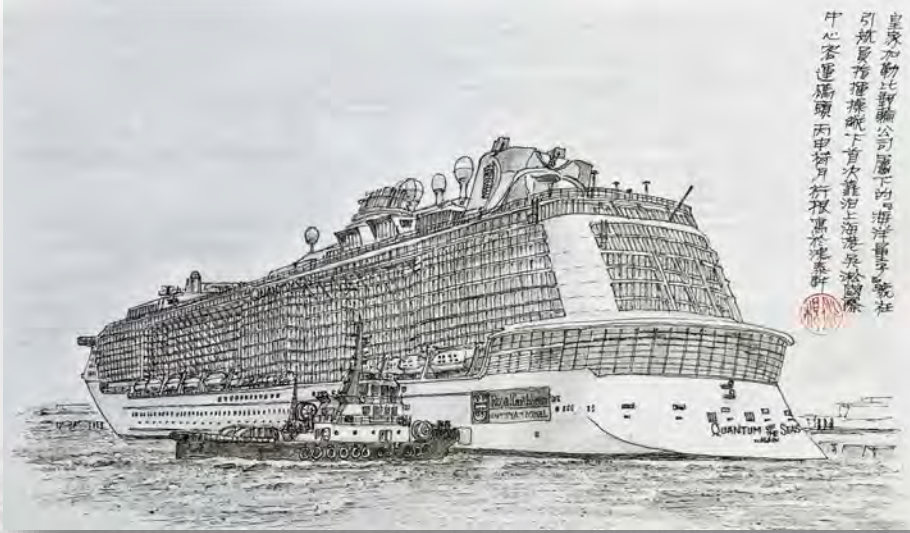




01

# Overview of piloting cruise ships in Shanghai

皇家加勒比亞郵輪公司旗下的  
三千禧年號郵輪丙申大暑  
浙根寓於滬



**WICT**  
Home port

**SPICT**  
Port of call

01

02



原籍大籍郵輪  
230米寬32米船員艙  
原名皇家公主  
丙申初夏行復舊

**WICT**  
**Size: huge**  
**Navigational aids: brand-new & advanced**  
**Berthing time: fixed**

**SPICT**  
**Size: medium**  
**Navigational aids: ordinary**  
**Berthing time: not fixed**



Podded propulsion or Conventional electric propulsion



Twin-screw with controllable pitch propellers or either conventional propellers



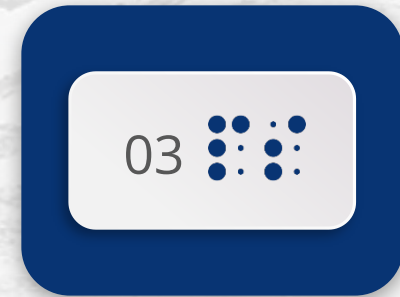


## The pilotage characteristics of cruise ships

Huge size



Enormous number of tide-utilizing vessels



Curved and narrow channel



瀟上鴻泰軒

癸巳年仲秋行振寫

22.5万吨在大洋中航行

总长301米宽66米高72米排

世界顶级豪华邮轮 海洋魅力



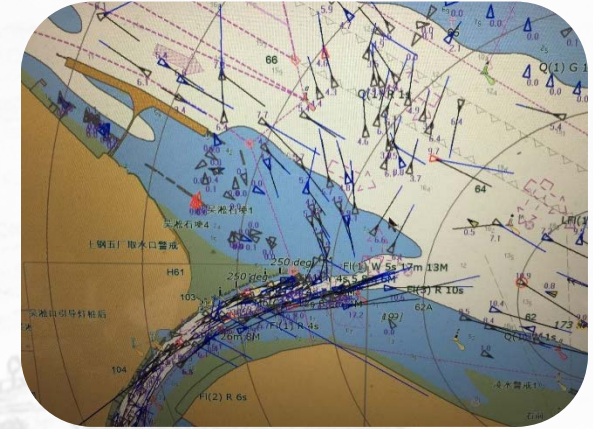
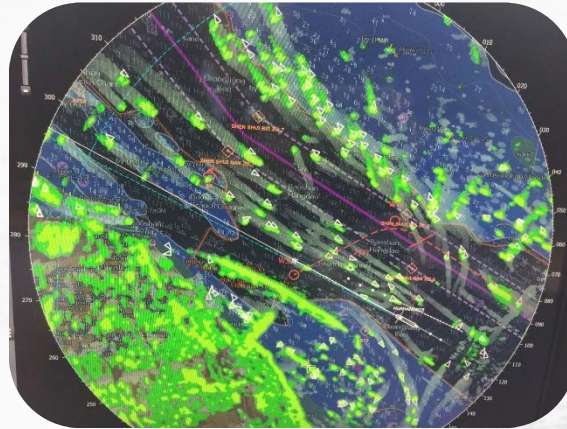
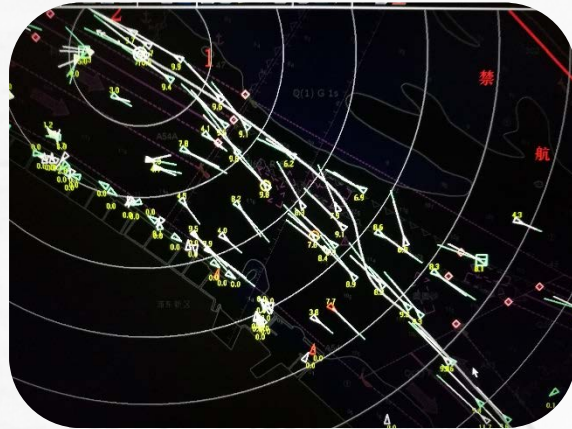
01

# Overview of piloting cruise ships in Shanghai



元 1070 寬 23 米 船 長 68 米 載 重 10810 噸 船 員 655 人 載 客 2002 年 法 國 航 運 公 司 代 辦 年 於 滬 上 鴻 泰 軒 永 晶 寧 靜 號 巴 哈 馬 籍 船 長 250 米

## The difficulty in piloting cruise ships in Shanghai



A

The contradiction between the tide-utilizing vessels moving in accordance with the tide time and the cruise ship's scheduled berthing and departure.

Cruise ship is also a motor vessel, which has no priority in avoiding collision, especially when it crosses the channel from berth.

B

「歌詩達塞琳娜」輪  
長290米寬44米  
載重8900噸於2007  
丁酉年八月於  
橫濱開工於滬



# Issues of piloting cruise ships in Shanghai







# Bettering the seating arrangement on the bridge



英國籍郵輪維多利亞  
總長294米 2007年下水  
六不  
相比之下，她不及其另  
瑪麗女王二世號  
白女王二世號大，但  
華英字號然



02

## Issues of piloting cruise ships in Shanghai

於上世紀1996年  
以維多利亞  
米尼咆嘯載  
行板寓於瀛

Correct understanding to ship  
navigation aid



01

Never reach the  
ultimateness





02

## Issues of piloting cruise ships in Shanghai

於上世紀1996年  
由達維多利亞  
米尼吧載  
行板寫於瀋

Correct understanding to ship navigation aid



01

Never reach the ultimateness

02

Being aware of the inadequacies of the aid







於上世紀1996年  
由達維多利亞  
米尼吧載  
行板寫於瀋

## Correct understanding to ship navigation aid



01

Never reach the ultimateness

02

Being aware of the inadequacies of the aid

03

Never be overdependent on ship navigation aid





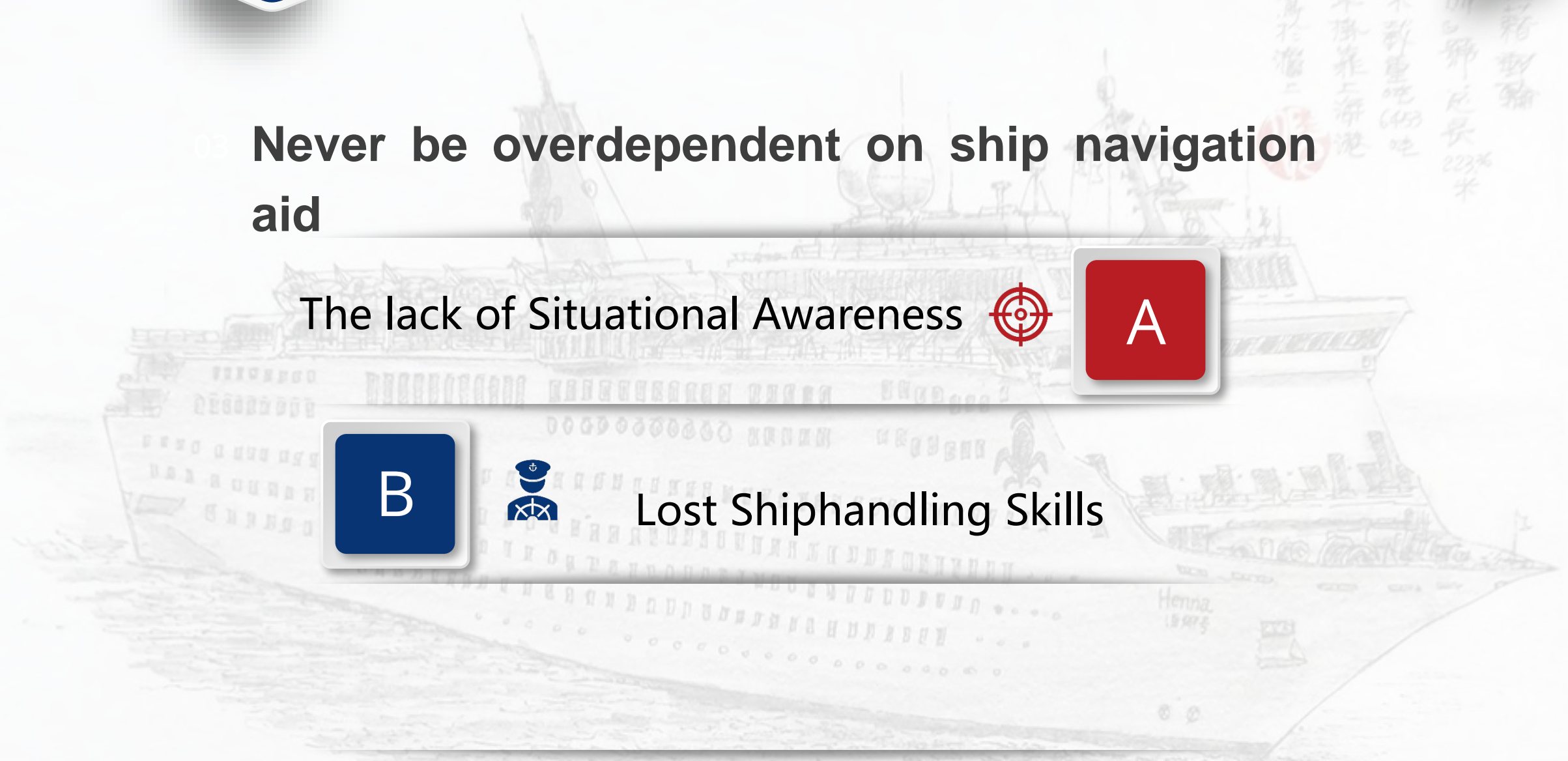
新嘉坡輪  
船長 223米  
寬 28米 載重 6450 噸  
買 巴 拿 馬 旗 上 海 港  
衙 樓 寫 於 滬 二

03 **Never be overdependent on ship navigation aid**

The lack of Situational Awareness



Lost Shiphandling Skills



官運  
於  
滬  
上  
客  
運  
於  
滬  
上  
號  
起  
長  
180.5  
米  
寬  
25.5  
米  
國  
首  
艘  
全  
資  
2000  
年

## Effective integration of bridge resources



Perfect utilization of BRM based on information symmetry



Communication of the maneuvering plan



Communication of the maneuvering intention



Communication of the maneuvering intention

Thinking aloud



Sometimes the Captains' solutions are not practical

Resolution:  
Recommended standard conning commands



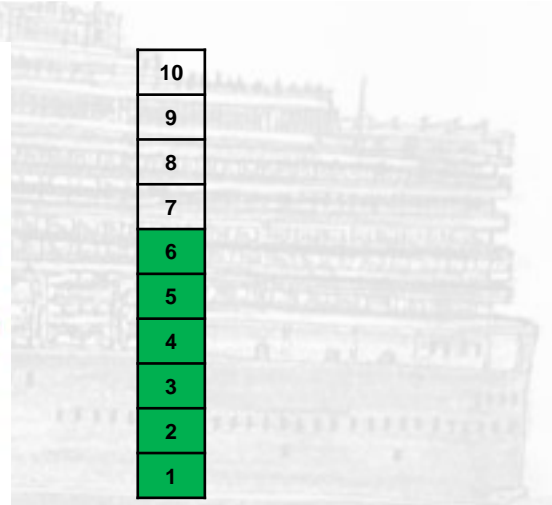
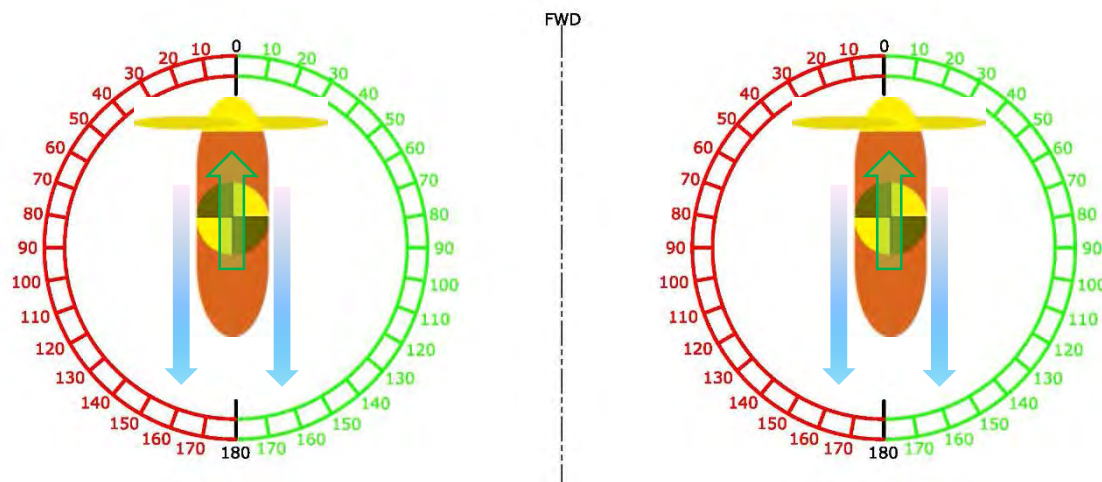
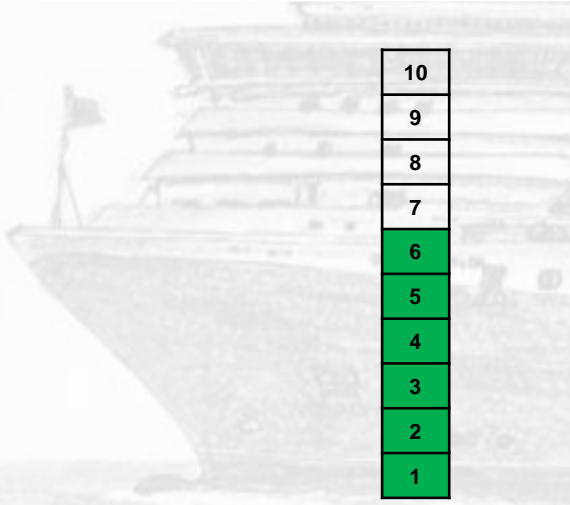
02

Issues of piloting cruise ships in Shanghai

Recommended standard conning commands

丁酉年歲暮行板  
 維多利亞女王號  
 所泊內輪房山所  
 是英國冠達郵輪公  
 號和瑪麗皇后號  
 穿33米尾地9000  
 力27台5000米

Engine Order	Rudder Order	
	System A	System B
Use level from zero to 10 of power in positive or negative direction	Use one pod inbound or outbound relative to the ship's center line with xx degrees	Use clock setting relative to the ship's bow
e.g. Port Pod Level 6 Positive	e.g. Port Pod inbound 60 degrees	e.g. Port Pod at two o'clock

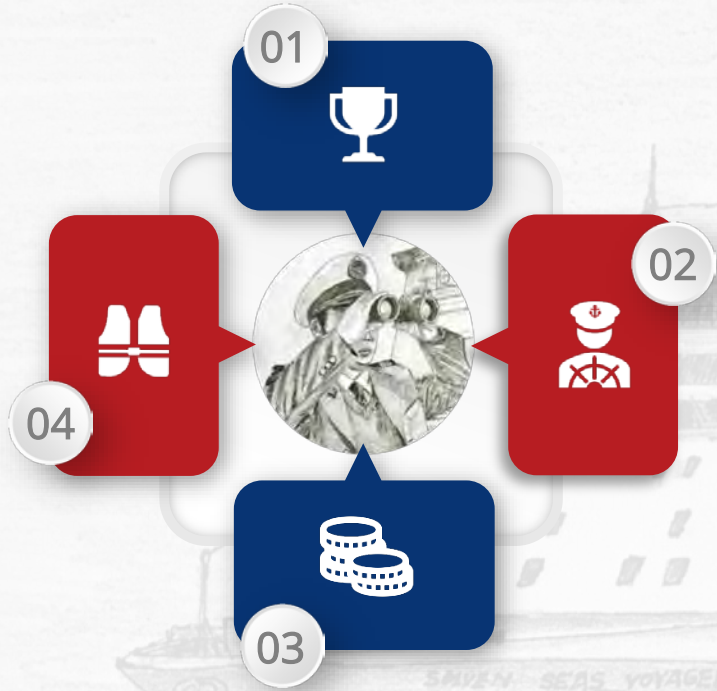




麗晶七海郵輪公司屬下的  
七海家郵輪長125米  
米  
丁酉年冬月行板  
滙上瀛泰軒



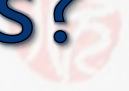
**Safety is always the first priority,  
certainty, no shortcut.**



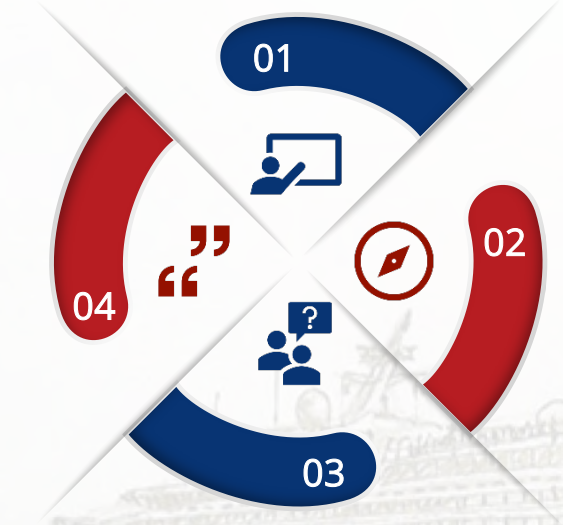
SAFETY SEAS VOYAGER



皇家加勒比郵輪公司旗下的  
航行者郵輪 船長310米寬  
48米船員114名載客量3840員丁酉春  
行根寓於滬上瀟泰軒



# Discussion or Questions?







2019



**THANK YOU!**