

Weather Routing and Avoidance of Severe Weather

Nautical Institute International Conference 2019 – Ship Handling
13 June 2019, Hong Kong

Tony Petronio – General Manager/Fleet Operations Center West

StormGeo

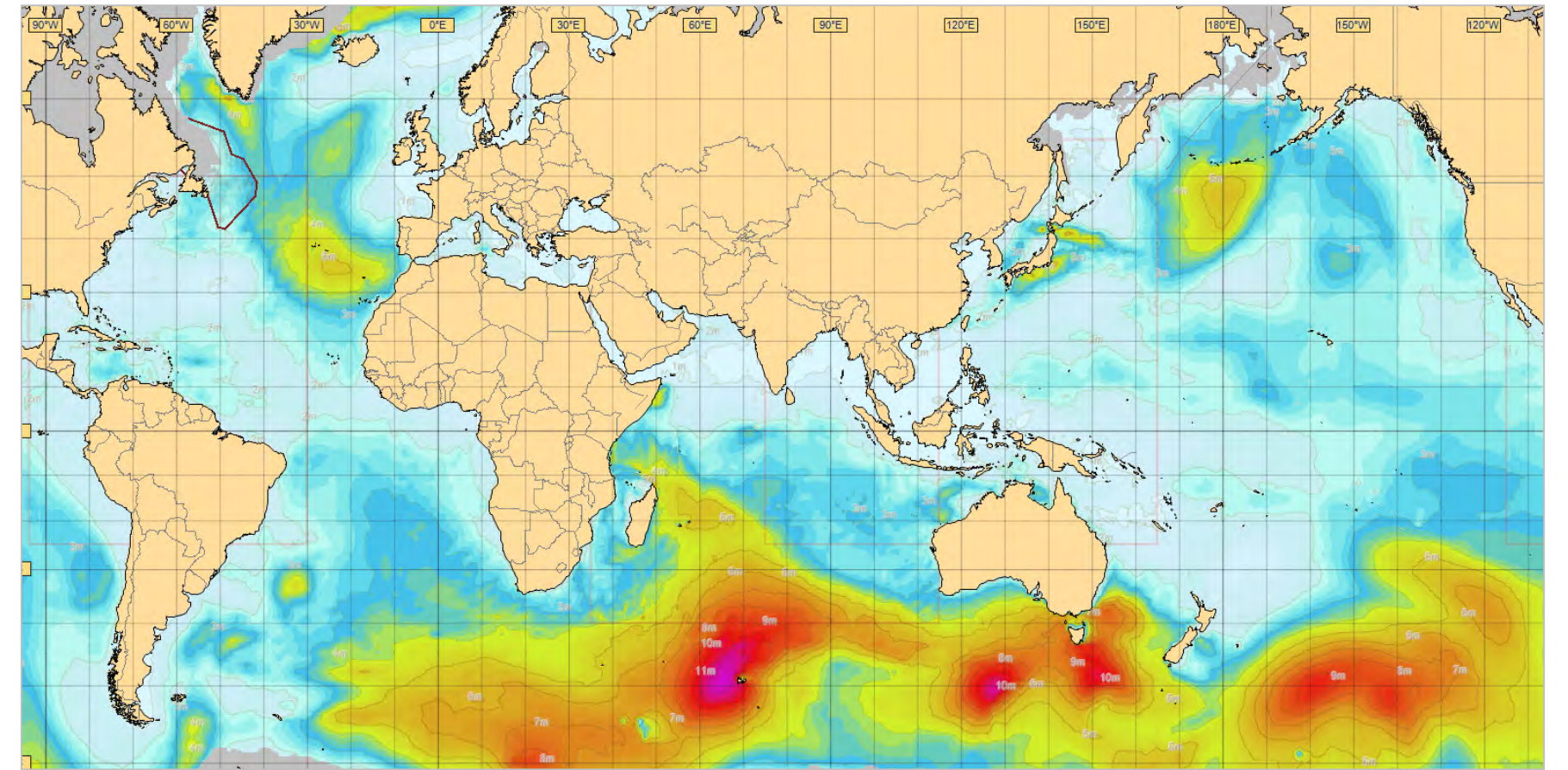
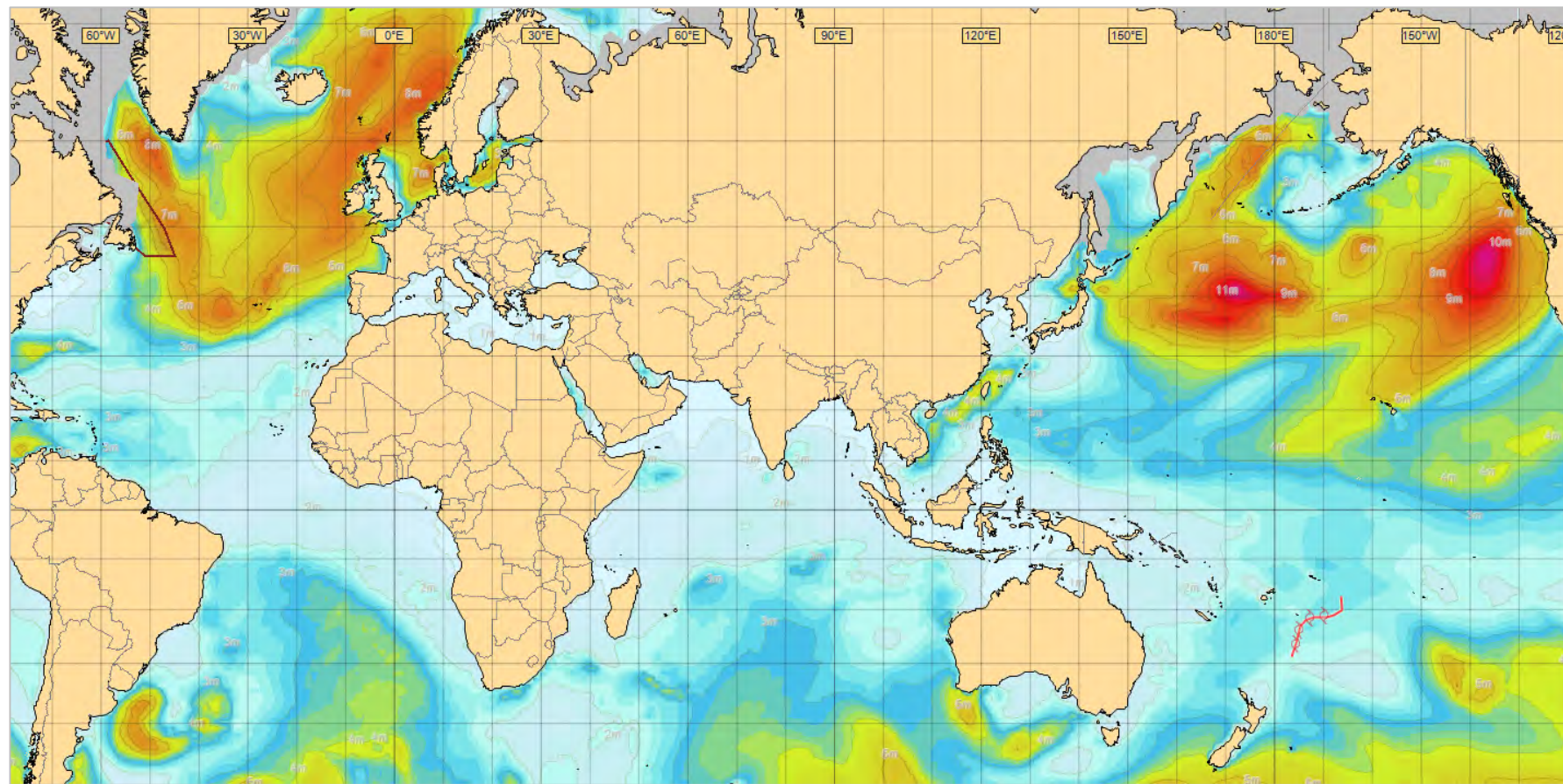
Applied Weather Technology

Ship routing factors

Before we look at weather and the forecast, there are important items to first understand:



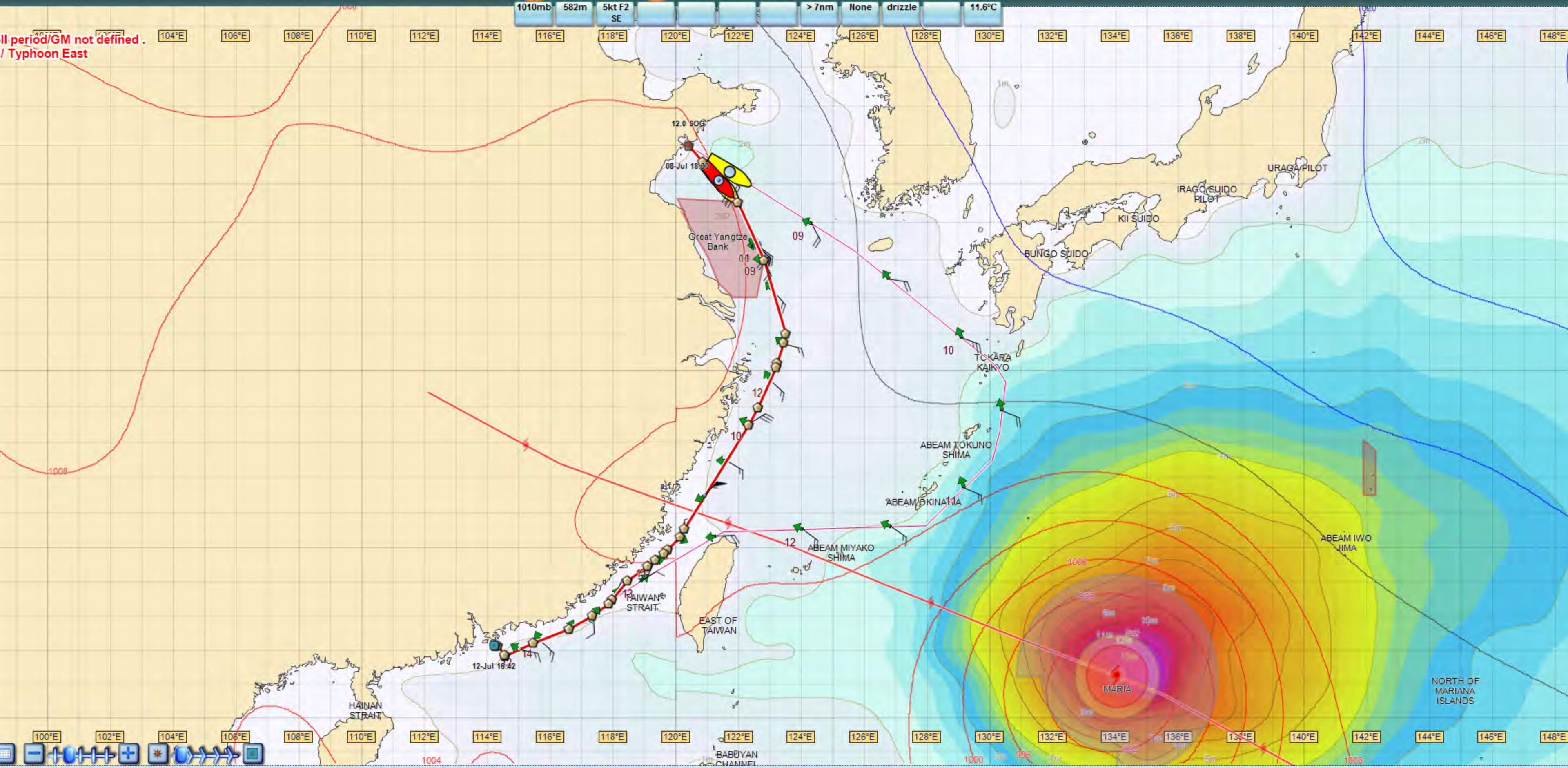
Where is the heavy weather? summer / winter





1010mb 582m 5kt F2 SE > 7nm None drizzle 11.6°C

!! period/GM not defined . / Typhoon East



100°E 102°E 104°E 106°E 108°E 110°E 112°E 114°E 116°E 118°E 120°E 122°E 124°E 126°E 128°E 130°E 132°E 134°E 136°E 138°E 140°E 142°E 144°E 146°E 148°E

Typhoon avoidance

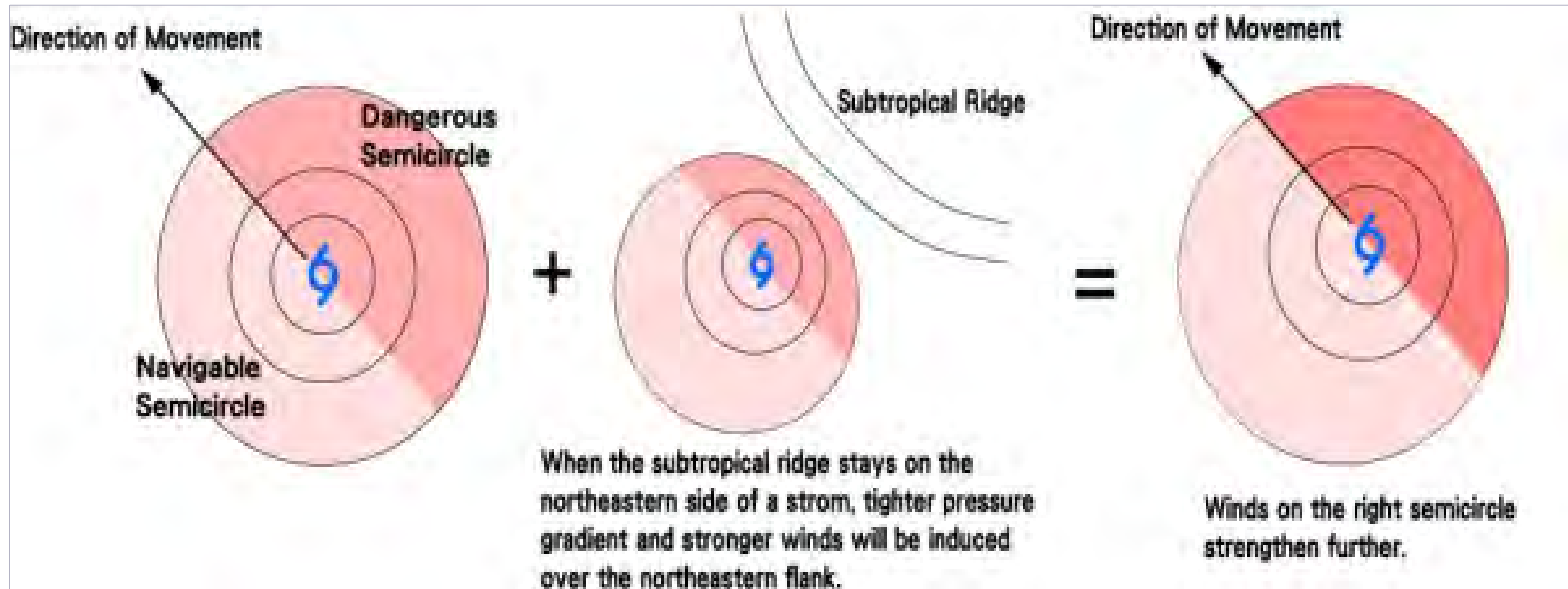


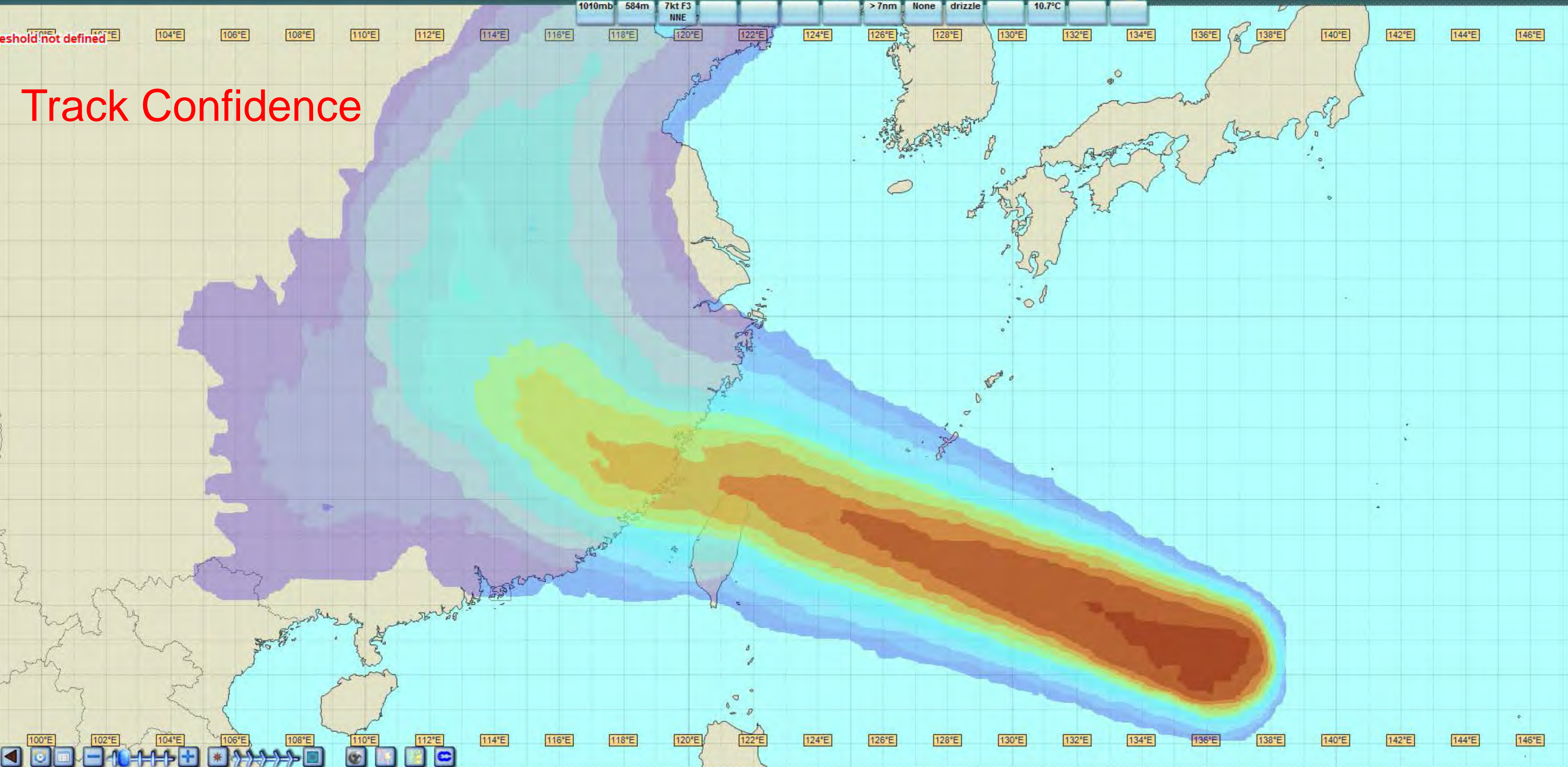
Image: Hong Kong Observatory



1010mb 584m 7kt F3 NNE > 7nm None drizzle 10.7°C

100°E 102°E 104°E 106°E 108°E 110°E 112°E 114°E 116°E 118°E 120°E 122°E 124°E 126°E 128°E 130°E 132°E 134°E 136°E 138°E 140°E 142°E 144°E 146°E

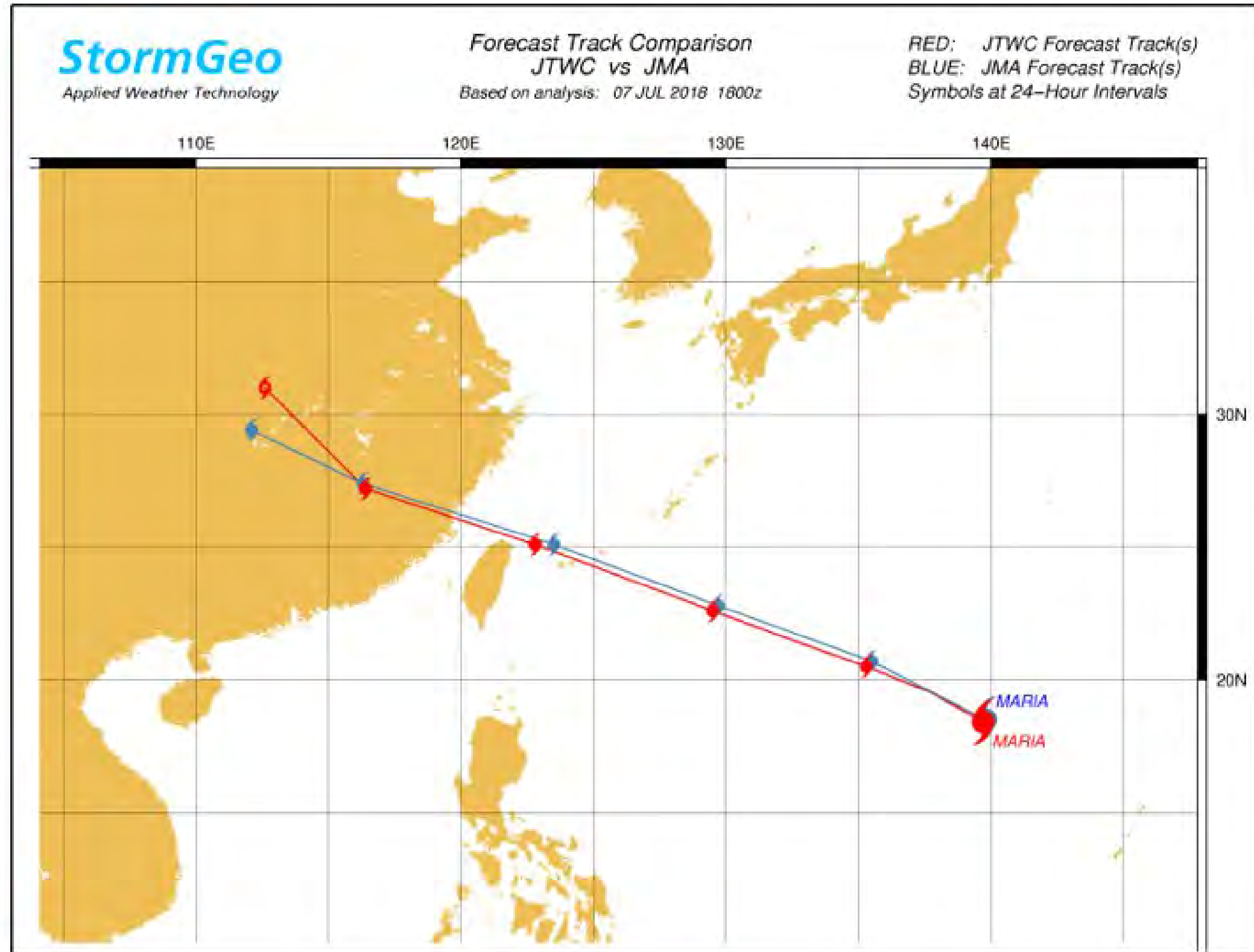
Track Confidence



100°E 102°E 104°E 106°E 108°E 110°E 112°E 114°E 116°E 118°E 120°E 122°E 124°E 126°E 128°E 130°E 132°E 134°E 136°E 138°E 140°E 142°E 144°E 146°E

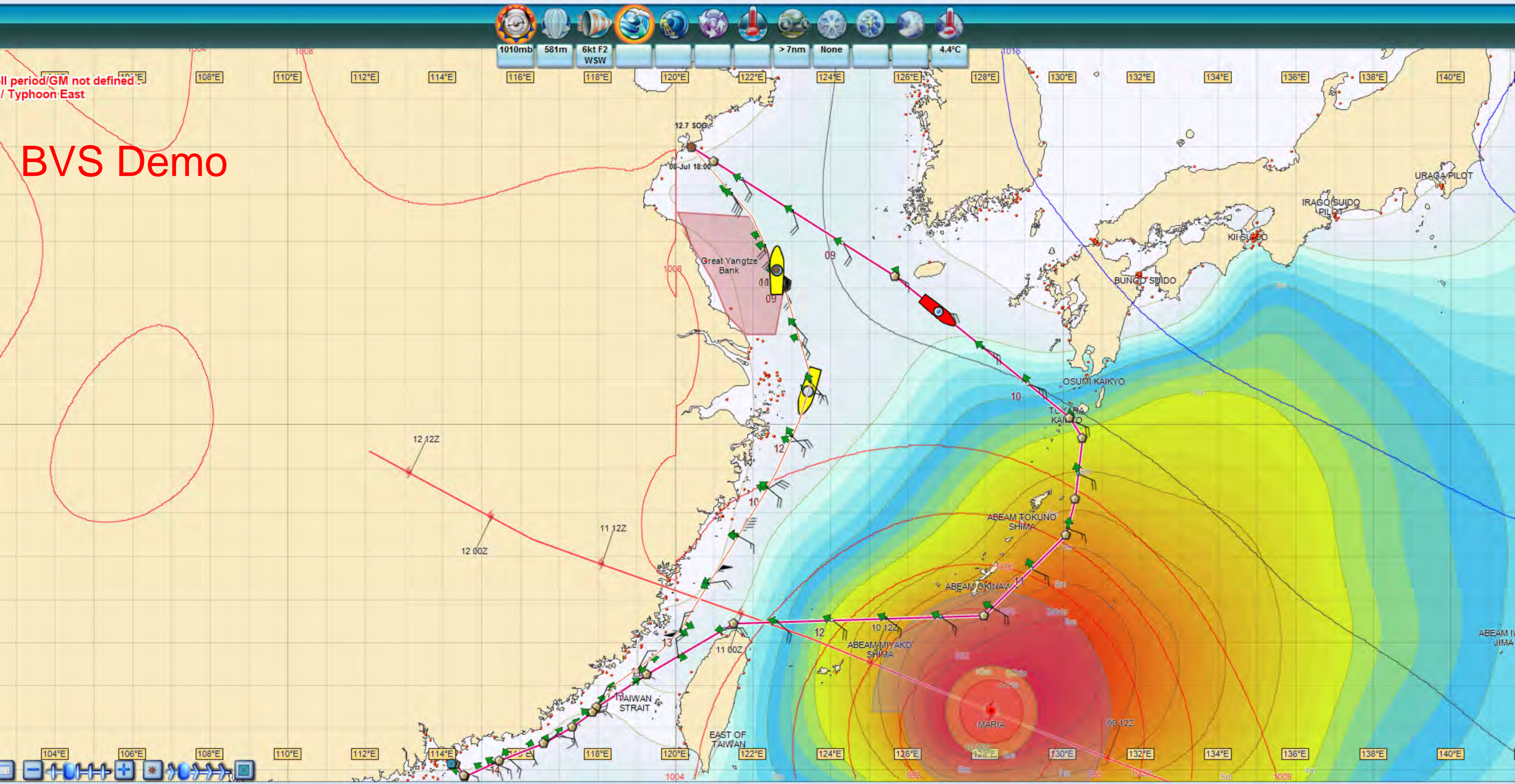


Forecast track comparison



Il period/GM not defined
/ Typhoon East

BVS Demo

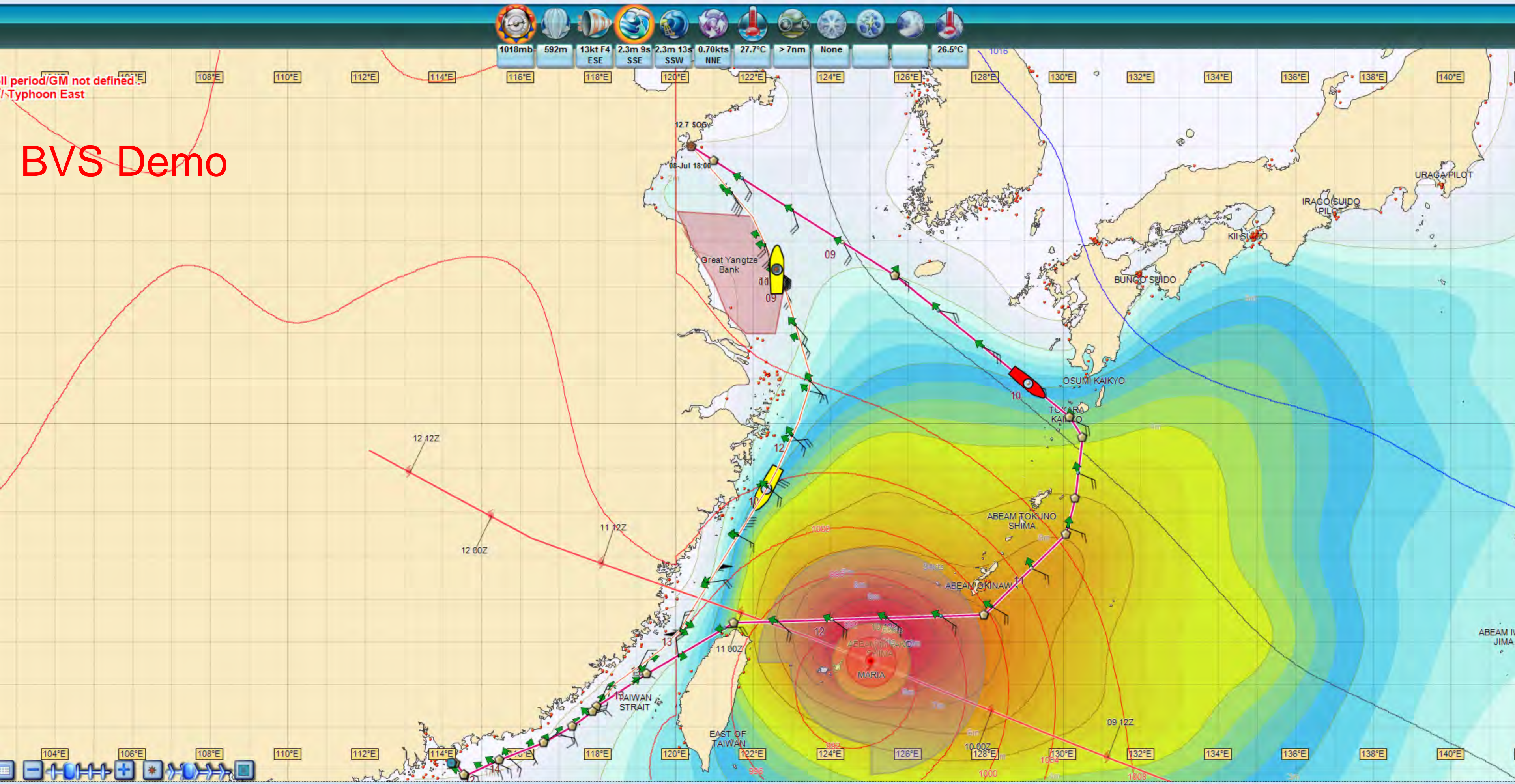


1010mb 581m 6kt F2 WSW > 7nm None 4.4°C

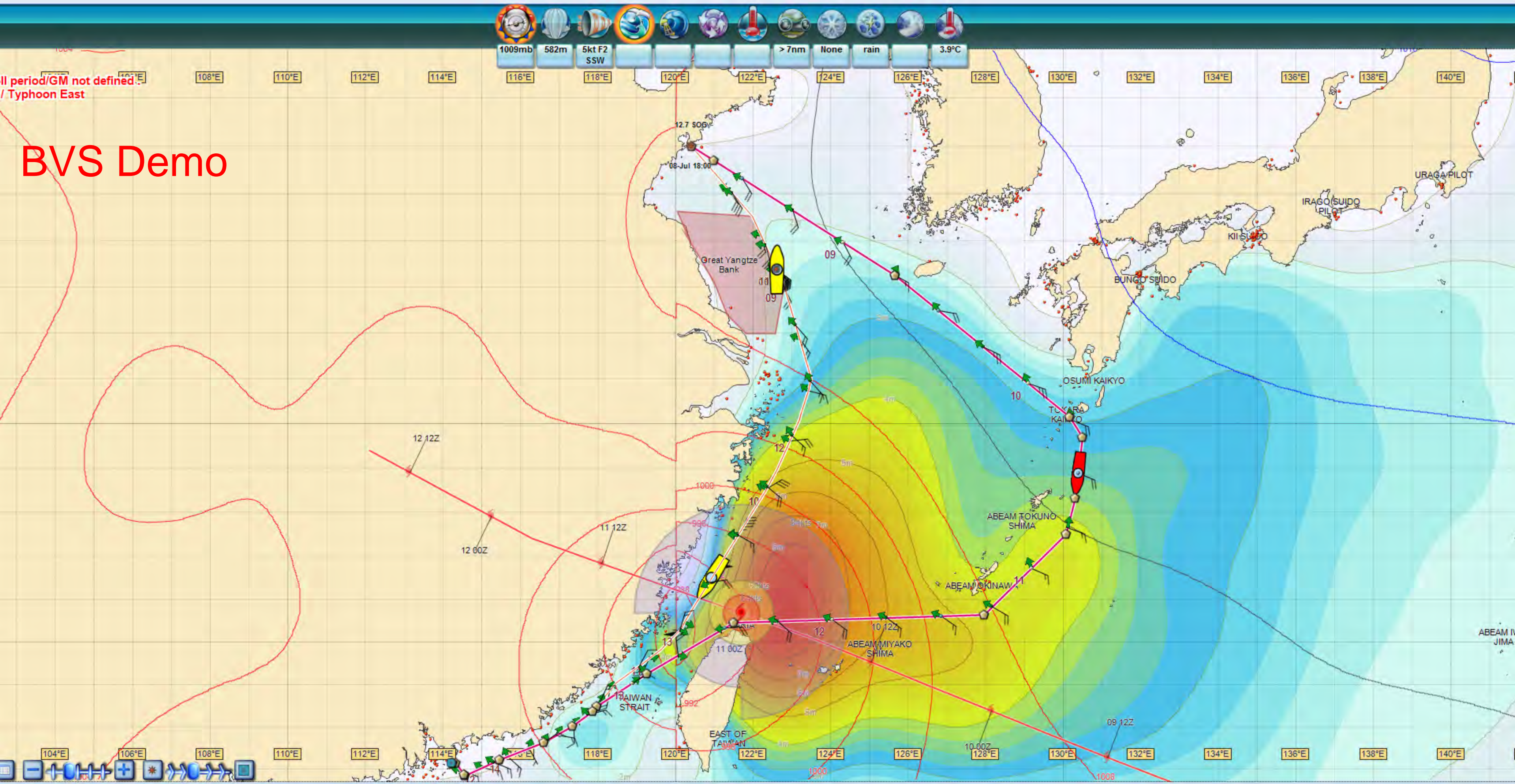
104°E 106°E 108°E 110°E 112°E 114°E 116°E 118°E 120°E 122°E 124°E 126°E 128°E 130°E 132°E 134°E 136°E 138°E 140°E

Ill period/GM not defined...
/Typhoon East

BVS Demo

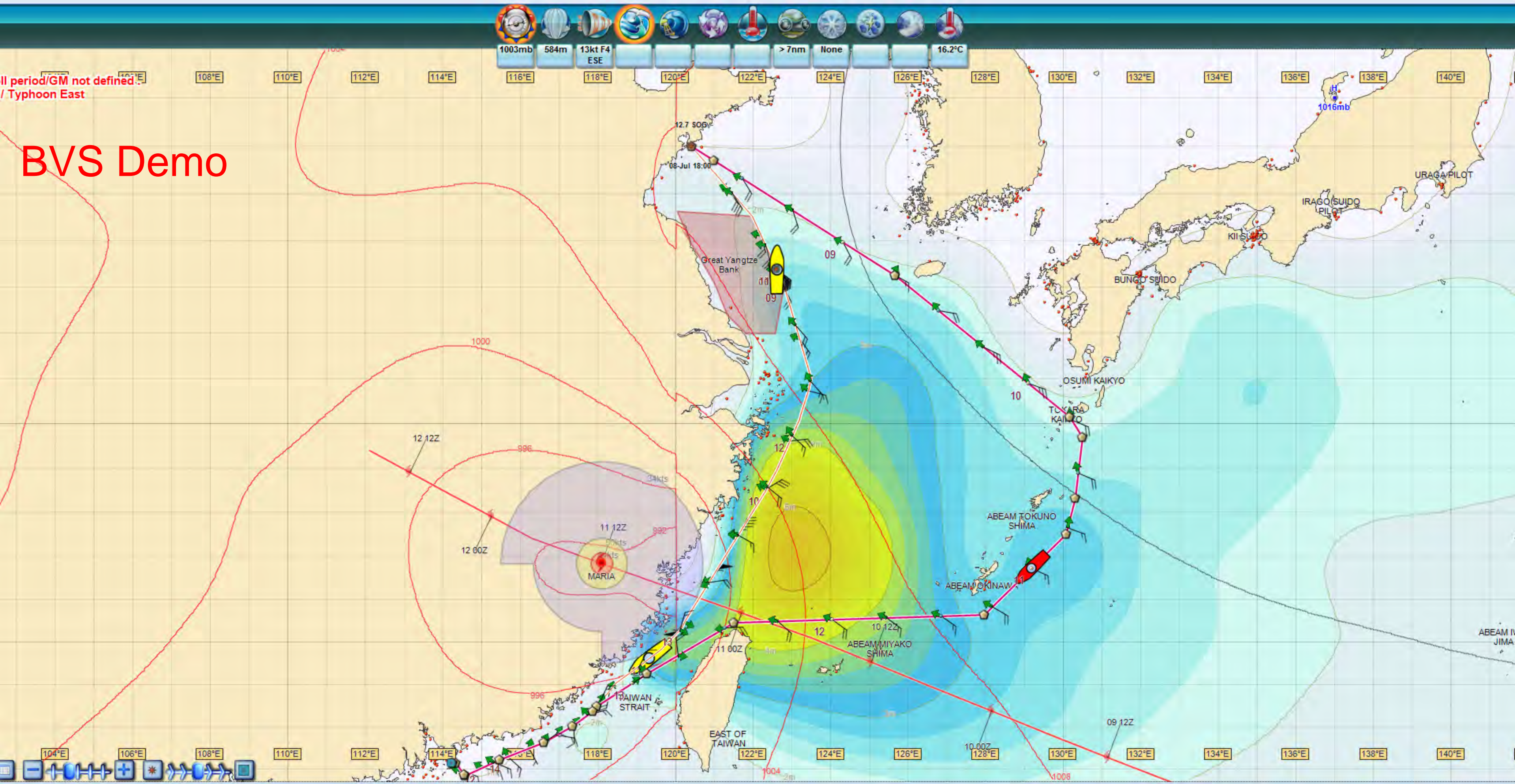


BVS Demo



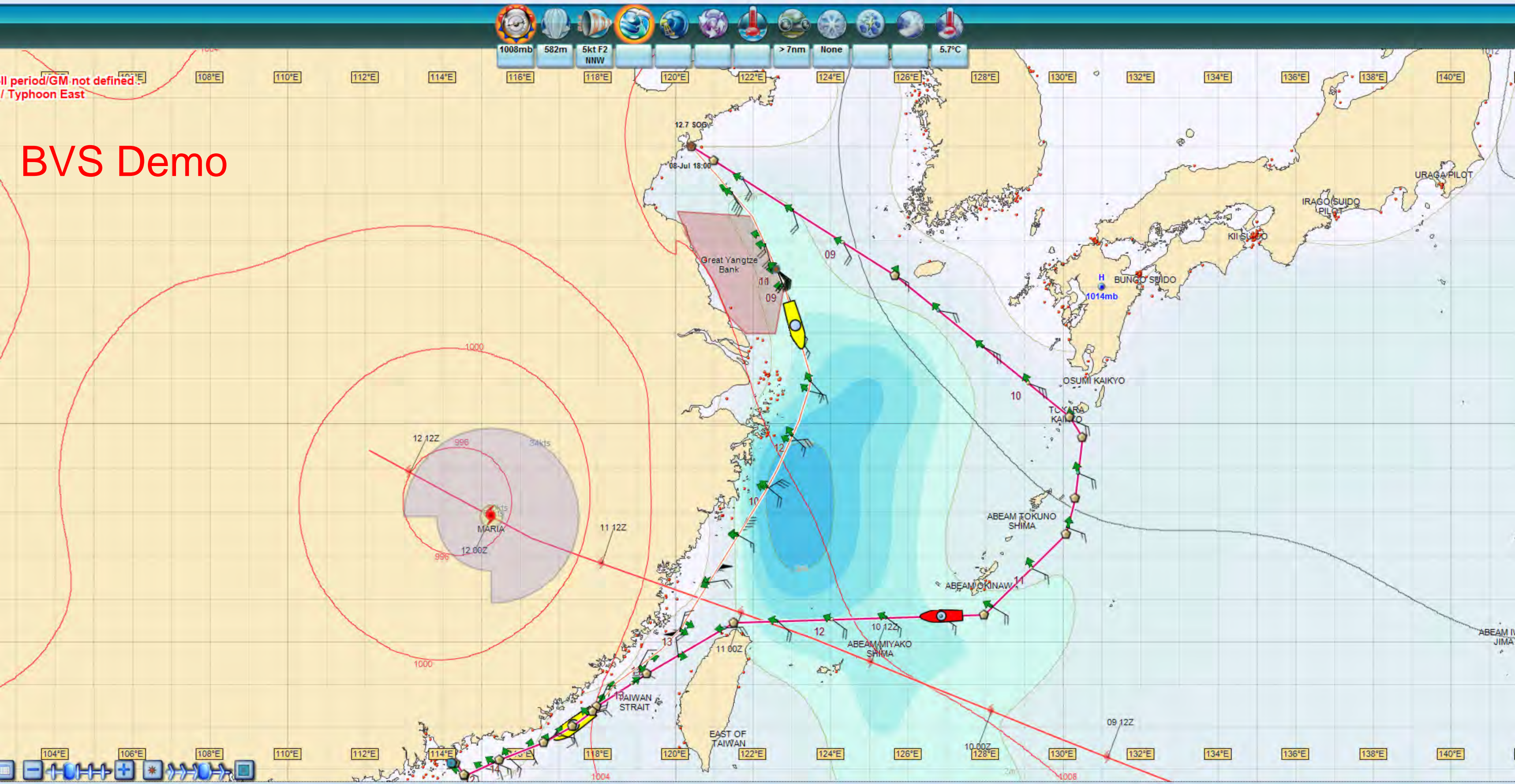
Il period/GM not defined
/ Typhoon East

BVS Demo



BVS Demo

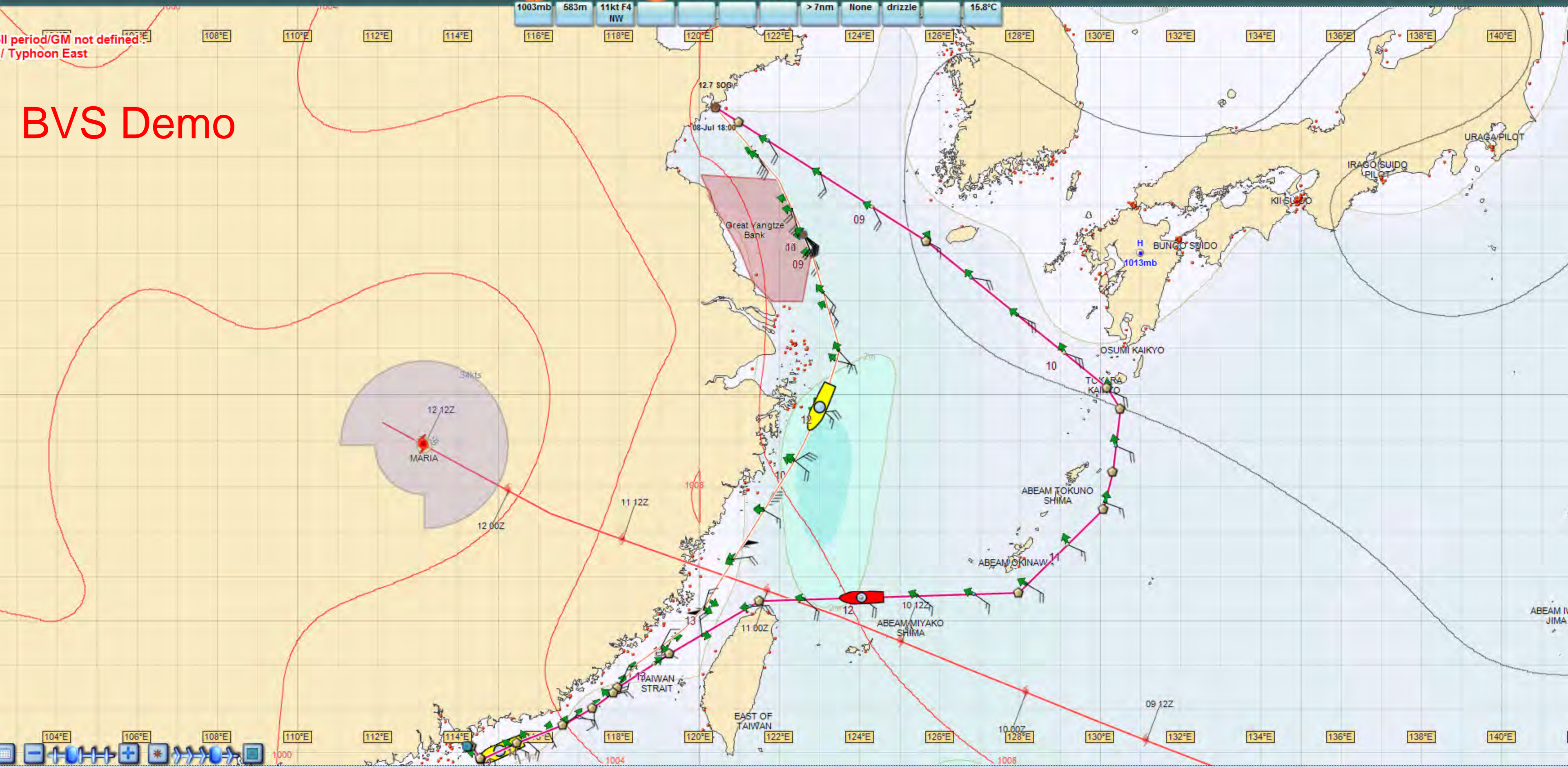
Il period/GM not defined... / Typhoon East



1003mb 583m 11kt F4 NW > 7nm None drizzle 15.8°C

ill period/GM not defined
 / Typhoon East

BVS Demo



104°E 106°E 108°E 110°E 112°E 114°E 118°E 120°E 122°E 124°E 126°E 130°E 132°E 134°E 136°E 138°E 140°E

Thank you

StormGeo
Applied Weather Technology

www.stormgeo.com
tony.petronio@stormgeo.com